



Uruguay

make your next deal
with uruguayan companies

and

 **turcatti**
Structural Engineering & BIM Consulting

M A G
MONTEVIDEO ARCHITECTURAL GROUP

 **HABITAR
ARQUITECTURA**

 **CSI Ingenieros**

 **LAGARSOFT**
INFORMATION TECHNOLOGY

/ARCHSOURCING
YOUR PROJECTS DEVELOPED.
YOU UNPLUG.

 **buyfromuruguay.uy**

 **Uruguay
SmartServices**

Highly qualified professionals | cultural affinity | convenient time zone

AUTODESK UNIVERSITY
LAS VEGAS
NOVEMBER 2019
BOOTH N°AE 231

and

and architects

www.aneirosdiaz.com

Arch. Juan Diego Díaz

+598 99 153 971

estudio@aneirosdiaz.com

We are an architectural firm based in Uruguay with our first projects passing their first decade, having gained experience in developing buildings ranging from housing, apartment buildings executive projects, industrial area, design and construction on the hotel industry, management of small to large scale projects and urban scale interventions.

In the industrial field we have specialized in the project, management and construction supervision of buildings of the pharmaceutical sector, as well as warehousing and pharma logistics. We have extensive experience in the area, with more than 400,000 sq ft executed.

We seek to understand people or groups for whom we work, making them part of the creative process, and providing tailored solutions to their particular needs.

Services

Provide assistance on the DD's (Design Development) and CD's (Construction Documents) phases

Areas of expertise:

- Residential
- Pharma Logistics
- Institutional buildings

Client target

Architectural and Engineering firms with need to outsource production of DD and CD documentation, with the added value of a firm with experience not only in the design phase but in the construction, and specialized advisors in every area.



PharmaHub

Client: TCU Uruguay - International Airport

Pharma Logistics center located in airport free zone. Controlled humidity and temperature, GMP compliance, offices.

The firm has been responsible for Schematic Design, Design Development and Construction Documents and now performing construction supervision

Status: Under construction

Area: 31,000 sq ft



Italy Embassy in Uruguay

Client: Ambasciata d'Italia / Repubblica Italiana

The firm has been responsible for Schematic Design, Design Development and now performing Construction Documents for the new Consulate building for Italy in Uruguay.

Status: Elaborating Construction Documents

Area: 8,000 sq ft



Pharma Laboratory Extension

Client: n/d

The firm has been responsible for Schematic Design for the expansion of a Pharmaceutical Plant (Uruguay) dedicated to the production of oncology and ophthalmology products


Status: Schematic Design completed


Area: 130,000 sq ft

/ARCHSOURCING
YOUR PROJECTS DEVELOPED.
YOU UNPLUG.

ARCHSOURCING

www.archsourcing.com

 archsourcing

 archsourcing

Mercedes Carriquiry

mercedes@archsourcing.com

+1 424 253 0774

Do you struggle with your project deliveries?

ARCHSOURCING is a cutting edge high-tech firm that helps busy architects to develop their projects, reduce costs and streamline production workflow with next generation use of BIM technology while architects focus on expanding their company. **Let's connect!**

Main services:

DDs and CDs Architectural Production

Bim modeling

Coordination

BIM implementation

Training

BIM Consulting

Client target:

Mid size Architecture Firms




CSI Ingenieros

<https://www.csi-ing.com/en/>

Micaela Bruno

mbruno@csi-ing.com

 csi-ingenieros

We are leaders in consulting and engineering Services in Uruguay, and one of the main firms in the region. We are a multi-specialist company that provides world-class services for the industrial and infrastructure sectors.

We have been part of our clients' success for over 40 years. We have developed thousands of projects in over 20 countries, always prioritizing excellence, innovation, and above all, the generation of value for our clients.

We have positioned our company as a successful **multi-specialist** firm, that stands out because of our **experience, expertise**, our **innovative** approach and mainly, the talent of more than 170 specialized people that work by our side every day.

As a knowledge-based firm, our people are the key to the success of our company.

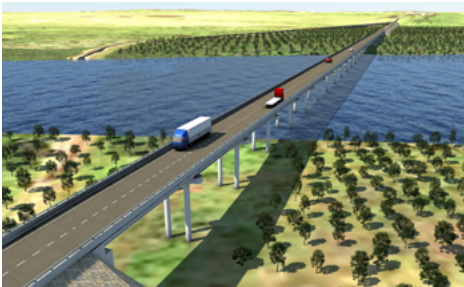
Over 170 people actively collaborate with our clients and Partners to imagine, design and develop solutions that allow us to succeed in all the projects we are part of.

OUR SERVICES: Engineering and Design, BIM, Detailed Engineering and Modeling Services, Project Management, Environmental and Information Technology, Planning, Asset Management.

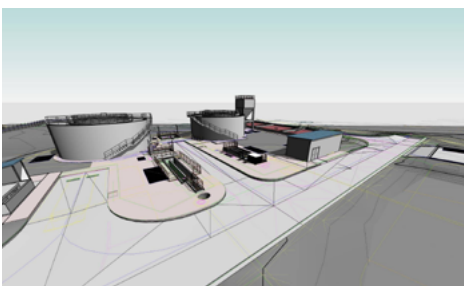
SECTORS: Roads and transportation, Industry and Construction, Water, Environment and Territory.



Extension of a malt production plant: Technical assistance and construction management.



Design of New insumergible bridges and adequacy of Route 30 using integrated BIM Model.



Final Plan Set of Effluent Treatment Plant for San Ramon city, integrating the hydraulic, architectural, roads and electrical compounds.



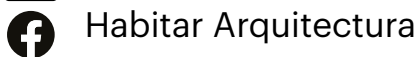
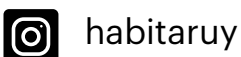
Habitar Arquitectura

www.habitararquitectura.com.uy

Arq. Gabriel Cagno

+598 99 884 984

gabrielcagno@habitararquitectura.com.uy
info@habitararquitectura.com.uy



Extraordinary architecture for new life experiences.

We believe architecture represents the most complex artistic expression made by humans and for humans. As such, it must always focus on improving people's well-being, which is exactly what our name tries to convey: *habitar* in Spanish means, indeed, 'to inhabit'. Be it in housing or business, retail or public spaces, architecture plays a major role in our everyday lives. Throughout history, organizations and families have found in architecture a way to leave a legacy. As architects, we are proud to contribute to enhancing the experience of inhabiting the space and consolidating such legacy.

We love what we do. Every project we embark on is a challenge to achieve something unique, personal, innovative and exciting, always inspired on our client's vision and seeking a high-quality artistic result. Doing so means being fully committed, making use of all our team's expertise and know-how as well as every necessary tool to produce an esthetic and functional outcome that truly lives up to our client's expectations.

We are there for our clients to ensure optimal results at every phase of the project, from the very inception until its concretion. When thinking about entrusting your future experiences to the right team, we might as well be a great choice.

We do more than just building: we inhabit architecture.

Levis

We are a reference of retail architecture in the country.

Many leading companies trust our work.

We carefully execute retail projects following guidelines based on brand manuals and also develop corporate identities for local businesses.

Coonvivi (render)

Our multidisciplinary teams carry out complex projects, adapting to the required scope.

We provide solutions for any stage of the project, from the very inception until the execution phase. using a wide variety of techniques.

Los Cerros de la Victoria

Dream the life you want and let us help you make it real. First, we put your ideas on paper, then we make them come to life.

Wherever you are, live your dreams.



LAGARSOFT
INFORMATION TECHNOLOGY


Lagarsoft


www.lagarsoft.com

Pablo Gancharov

pablo.gancharov@lagarsoft.com

 info@lagarsoft.com

 lagarsoft_eng

 lagarsoft-srl

 lagarsoftsrl

We are a team of engineers with a background in software development, data analysis, automation, architecture, real estate, and agile management.

POC Validations:

We work with you to iteratively test and validate ideas.

You can start thinking about weeks instead of months when trying to see ideas become true.

Software Architecture:

Building valuable software solutions with high quality and cost-effectiveness can be a hard skill to master, and in our case is what we love to do the most. To us, this means workflows, data structures, user interactions, and value delivered.

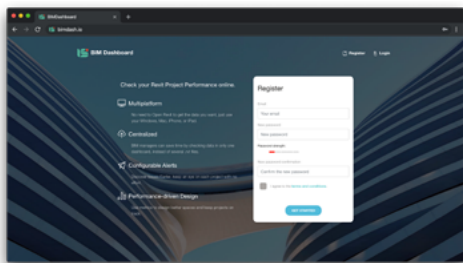
Customization:

When out-of-the-box software doesn't cut it, we develop custom software solutions for your outside-the-box problems.

Sometimes you wish app X and Y were able to speak the same language and we can fill the gap for you.

Automation:

Simplifying the difficult and automating the repetitive to help you construct amazing projects, on-time and under budget.



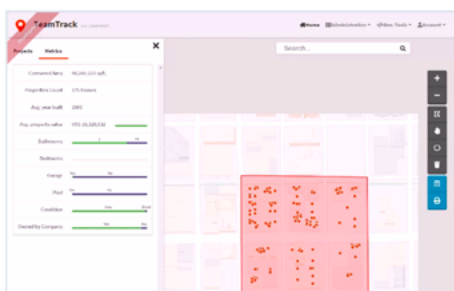
www.Bimdash.io

"Check your Revit Project Performance online. Free tier up to 5 projects, No credit card required."

Multiplatform: No need to Open Revit to get the data you want, just use your Windows, Mac, iPhone, or iPad.

Centralized: BIM managers can save time by checking data in only one dashboard, instead of several .rvt files.

Configurable Alerts: Discover Issues Earlier, keep an eye on each project with no effort.



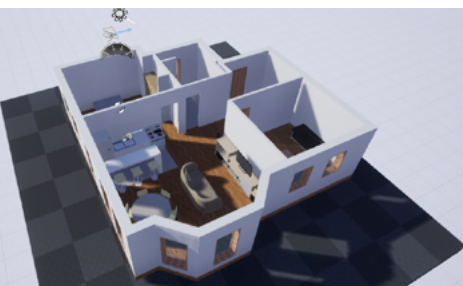
Team-Track

www.lagarsoft.com/work/team-track

"Dashboard tool to analyze spatial data"

"Leveraging third-party data allows people to focus their daily operations, improve logistics, use resources more efficiently and reduce costs.

Sometimes data is available, and we just need an ergonomic tool that allows us to navigate it"



From Revit to Unreal Proof Of Concept

https://www.lagarsoft.com/lab/revit-unreal

Feeling a space before its built

'We use "Unreal Engine" (a game development environment) to visualize and experience architectural models that are very far from being built.'

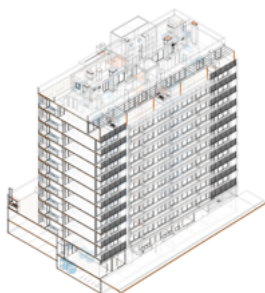
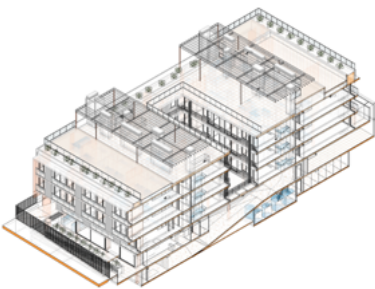
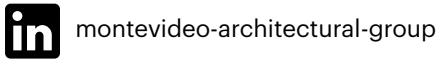


Montevideo Architectural Group

www.mag.com.uy

Vicente Bonilla

vbonilla@mag.com.uy



We provide services to architecture firms, contractors and developers all over the world.

We believe in technology as a tool to improve the quality of our work, as well as a way to ensure professional responsibility. Our mastery of the BIM platforms is our main value. Our skill set is highly regarded, well sought after and thus puts us ahead in the architecture field.

Services: BIM Modeling

We create virtual models of different disciplines, taking 2D documents as a starting point.

- Architecture, structure and MEP models
- As-built model
- Quantifications

Construction Documentation: We design and produce documents that are required for the construction process. BIM platforms are used in order to deliver high-quality products.

- Drawings extracted from BIM models
- 2D CAD drafting

Advanced coordination: BIM technology allows us to identify and report the interferences between different 3D models (architectural, structural, MEP) prior to actual construction.

- Clash detection

Visualization: In order to successfully communicate the essence of every project, we use the latest innovative tools to create outstanding and realistic 3D images.

- Renders
- Animations

Harambure

Harambure is a 22.000 sf elderly housing project located in Uruguay and developed by GDM Architects together with MAG. MAG was responsible for the schematic design, construction permit, construction documentation, coordination of all the disciplines and clash detection. The project was developed using BIM technology which helped in the design definitions. The work scope included the elaboration of plans, details, schedules, quantification of elements and analysis of interferences between the architectural, structural and MEP models.

MORE Echevarriarza

MORE is a 55.000 sf housing project located in Uruguay and developed by Gomez Platero Architects. MAG was responsible for the construction documentation and the coordination of all the disciplines. The project was developed using BIM technology and the work scope included the elaboration of plans, details, schedules, quantification of elements and coordination between the different disciplines.

Torre La Guardia

Torre La Guardia is a 70.000 sf housing project located in Uruguay and developed by Flores Gallinal Architects. MAG was responsible for the construction permit, construction documentation, coordination of the different disciplines and clash detection. The project was developed using BIM technology and the work scope included the elaboration of plans, details, schedules, quantification of elements and analysis of interferences between the architectural, structural and MEP models.



turcatti
Structural Engineering & BIM Consulting

Turcatti

Structural Engineering & BIM Consulting
www.turcattih-en.com

Martin Turcatti

Principal
martin@turcattih.com

Fred Garbuyo

Marketing and Sales
federico.garbuyo@turcattih.com

We help Architects, General Contractors and Subcontractors to coordinate projects in an efficient and productive way, using the latest collaboration tools.

We also provide Structural focused BIM services, through our Structural Engineering Division

Proven experience working for Top 10 US General Contractors for more than 5 years.

We fully understand the construction processes, which leads to value-added BIM services.

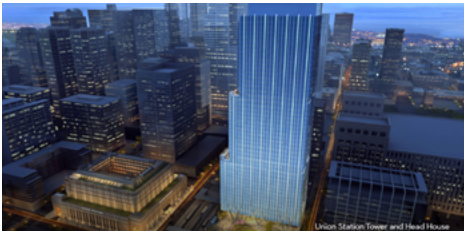
Services provided

MEP coordination services in design phase and construction phase. We work closely with GCs and subcontractors during the whole coordination process, attending to coordination meetings and providing solutions to issues found.

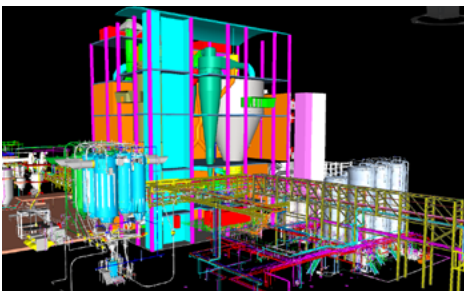
MEP modeling LOD 300 - 350

Structural focused BIM services. Structural modeling including fabrication rebar and rebar coordination. Constructability reviews.

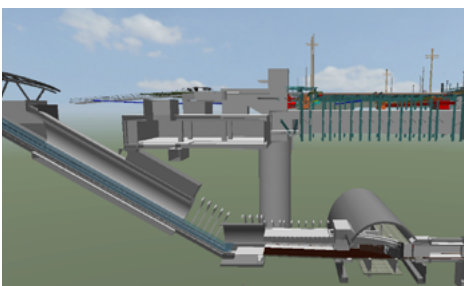
Laser scanning services. Scan to BIM



Project: Union Station Tower, Chicago, IL - 50 story office building
Scope: MEP Modeling and Coordination services
Client: Clark Construction



Project: New Dairy Products Industrial Plant
Scope: MEP Coordination services
Client: Dairy Products Company



Project: Medical Center Metro Station, Bethesda, MD
Scope: Structural rebar modeling. Constructability review.
Client: Clark Construction